

**034 MOTOR SPORT**

The X-Clear Driveshaft Tunnel Brace is designed to increase clearance for aftermarket exhausts by replacing the shallow-fitting OEM tunnel brace. This allows for a larger diameter exhaust to be installed without causing excessive rattling or vibration.

**Installation Spiciness Rating: MILD**

Installation of your 034Motorsport X-Clear Brace is a straightforward process that will take approximately 30 minutes to complete.

**Supplied Parts:**

- 034 Driveshaft front tunnel brace
- 034 Driveshaft rear tunnel brace
- (4x) M8x25mm Bolts
- (4x) M8 nuts

**Tools Needed:**

- 13mm Socket
- 10mm Socket
- 6mm Allen bit
- Torque wrench

About This Guide

This Install Guide documents the installation process on a Mk8 VW GTI. There may be minor differences depending on specific vehicle, market, options, etc.

Getting Started

Confirm you have received all the parts included with your purchase by reading the complete guide, if there are missing components, please contact:

[customerservice@034motorsport.com](mailto:customerservice@034motorsport.com)

**\*Exhaust pipes may be hot! Let them cool off before starting the installation.**

### Install Steps

#### Step 1

Lift the car to gain access to the underside.



#### Step 2

Using a 10mm socket, loosen the hardware for the belly pan, near the rear chassis brace.



#### Step 3

Using a 13mm socket, remove the hardware securing the rear chassis brace to the chassis.



#### Step 4

Remove the rear chassis brace.





#### Step 5

Install the 034 X-Clear rear chassis brace.



#### Step 6

Using a 13mm socket, install the hardware to secure the factory chassis brace to the chassis.



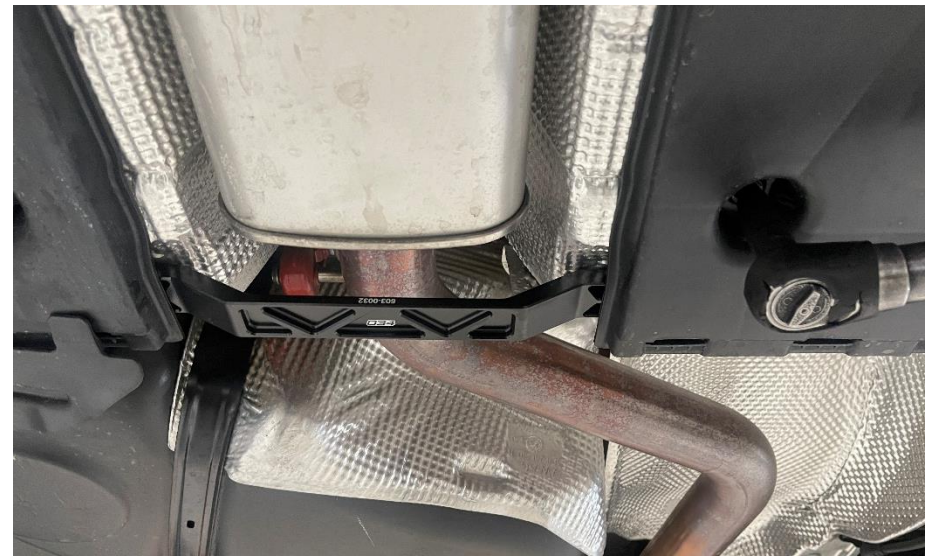
#### Step 7

Torque the hardware to **20Nm**.



#### Step 8

Using a 10mm socket, tighten the hardware for the belly pan, near the rear chassis brace.





**Step 9**

Using a 13mm socket, remove the hardware securing the front chassis brace to the chassis.

**Step 10**

Remove the front chassis brace.

**Step 11**

Using a 6mm Allen bit, install the front chassis brace with the provided hardware.

**Step 12**

Torque the hardware to **20Nm**.





**Step 13**

Stand back and appreciate all the rigidity and exhaust pipe clearance you now have.

**Step 14**

Lower the car back down and enjoy!

